

WESTERN SYDNEY  
UNIVERSITY



The MARCS Institute for Brain,  
Behaviour and Development

# Getting Published in Music Psychology

## Kate Stevens

Editor-in-Chief *Music Perception*  
MARCS.Director@westernsydney.edu.au

 UNIVERSITY  
of CALIFORNIA  
PRESS

1

## Outline

1. An overview of trends in academic publishing (5 mins)
2. When and how to select a journal? (10-15 mins)
3. Steps in the journal article publication process (5 mins)
4. Common (fixable) challenges Editors see (5 mins)

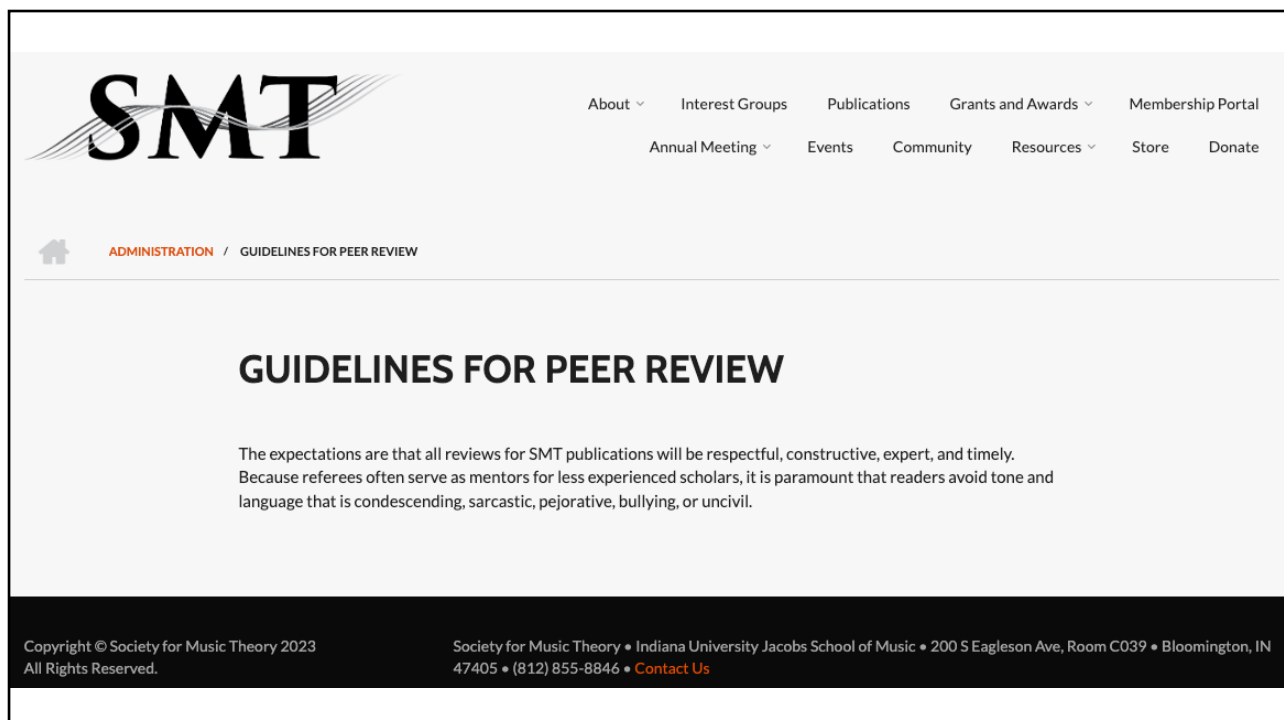
Questions, comments throughout

2

## 1. Some trends in academic publishing

1. Equity, inclusion, **respectful practices**: topics, boards, reviewing, authoring
2. Open Science: data sharing, re-analysis, replication, registration
3. Online data collection
4. Statistical analyses: linear mixed effects models; Bayesian
5. Predatory journals <https://beallist.net/#update>
6. **Open access journal fees and publisher archiving policies**


3



The screenshot shows the SMT website header with the logo and navigation links: About, Interest Groups, Publications, Grants and Awards, Membership Portal, Annual Meeting, Events, Community, Resources, Store, and Donate. Below the header, the breadcrumb trail reads 'ADMINISTRATION / GUIDELINES FOR PEER REVIEW'. The main heading is 'GUIDELINES FOR PEER REVIEW'. The text states: 'The expectations are that all reviews for SMT publications will be respectful, constructive, expert, and timely. Because referees often serve as mentors for less experienced scholars, it is paramount that readers avoid tone and language that is condescending, sarcastic, pejorative, bullying, or uncivil.' The footer contains copyright information for 2023 and contact details for the Society for Music Theory at Indiana University.

**SMT**

About ▾ Interest Groups Publications Grants and Awards ▾ Membership Portal  
Annual Meeting ▾ Events Community Resources ▾ Store Donate

 **ADMINISTRATION** / GUIDELINES FOR PEER REVIEW

## GUIDELINES FOR PEER REVIEW

The expectations are that all reviews for SMT publications will be respectful, constructive, expert, and timely. Because referees often serve as mentors for less experienced scholars, it is paramount that readers avoid tone and language that is condescending, sarcastic, pejorative, bullying, or uncivil.

Copyright © Society for Music Theory 2023  
All Rights Reserved.

Society for Music Theory • Indiana University Jacobs School of Music • 200 S Eagleson Ave, Room C039 • Bloomington, IN 47405 • (812) 855-8846 • [Contact Us](#)

4

**Sherpa Romeo** is an online resource that aggregates and analyses publisher open access policies and provides summaries of publisher copyright and open access archiving policies journal-by-journal.

<https://v2.sherpa.ac.uk/romeo/>

The screenshot shows the Sherpa Romeo website interface. At the top is a green header with the 'Sherpa Romeo' logo and navigation links: About, Search, TJ List, Statistics, Help, Support Us, Contact, and Admin. Below the header, the journal title 'Music Perception: An Interdisciplinary Journal' is displayed. The main content is divided into two sections: 'Publication Information' and 'Publisher Policy'.

**Publication Information**

Title	Music Perception: An Interdisciplinary Journal (English)
ISSNs	Print: 0730-7829 Electronic: 1533-8312
URL	<a href="https://online.ucpress.edu/mp">https://online.ucpress.edu/mp</a>
Publishers	University of California Press (University Publisher)

**Publisher Policy**

Open Access pathways permitted by this journal's policy are listed below by article version. Click on a pathway for a more detailed view.

Published Version	Open Access Pathways
None	Institutional Repository, Subject Repository, Author's Homepage
Embargo	No Embargo
Location	Author's Homepage Institutional Repository Subject Repository
Conditions	Published source must be acknowledged with citation Set statement to accompany (see policy)

Accepted Version	Open Access Pathways
None	Academia.edu, ResearchGate
Embargo	No Embargo
Location	Named Academic Social Network (Academia.edu, ResearchGate)
Conditions	Must link to published article

5

## 2. When and how to select a journal?

- Early and before writing the manuscript!
- Publication plan as part of research and thesis planning
- When writing a grant application
- Discuss with supervisor, colleagues with publishing experience

6

## How to select a journal?

- Mainstream or specialist?
- One experiment/study or multiple?
- Methods: Qualitative, quantitative or mixed?
- Audience: Who should know about the study? Tip: what journals will be cited in Reference List AND read some recent issues!
- Cost of open access fees
- *Research* the journal! – Aims and Scope, note the nuances....

7



sempré:

Society for Education, Music, and Psychology Research

Impact Factor: 1.904 / 5-Year Impact Factor: 2.384

### Aims and scope

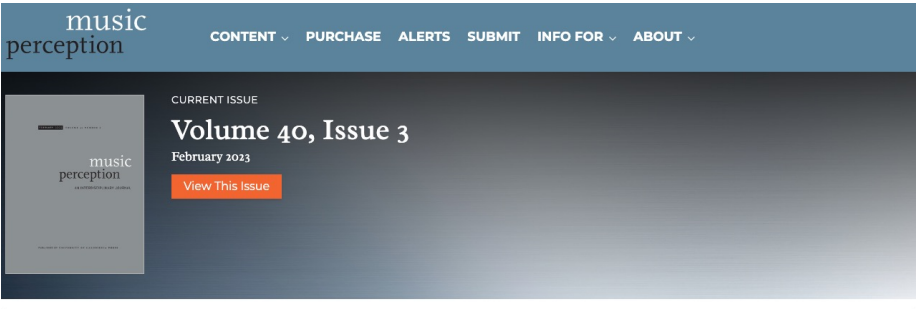
*Psychology of Music* publishes peer-reviewed papers directed at increasing the scientific understanding of any psychological aspect of music. These include studies on listening, performing, creating, memorising, analysing, describing, learning, and teaching, as well as applied social, developmental, attitudinal and therapeutic studies. Special emphasis is placed on studies, which address the interface between music psychology and music education.

Published by the Society for Education, Music and Psychology Research (SEMPRE), the journal aims to increase the scientific understanding of all psychological aspects of music and music education. This includes studies on listening, performing, creating, memorizing, analyzing, describing, learning and teaching as well as applied social, developmental, attitudinal and therapeutic studies.

Submissions may be: theoretical critical papers or original empirical investigations containing systematic qualitative or quantitative analyses of relevant data; short research reports and notes which substantially confirm or extend existing knowledge but which do not justify a full-length paper; or reviews of books, DVDs, CD Roms or online materials. Special emphasis is placed on studies carried out in naturalistic settings, especially those which address the interface between music psychology and music education.

*Psychology of Music* provides collections of free to access articles from the archive, centred around key topics and themes. The collections are collated by individuals across the field, and include an introduction to the topic or theme. [Read them here.](#)

8



**music perception**

CONTENT ▾ PURCHASE ALERTS SUBMIT INFO FOR ▾ ABOUT ▾

**CURRENT ISSUE**  
**Volume 40, Issue 3**  
 February 2023  
[View This Issue](#)

**Recently Published**

**No Heightened Musical Pitch Weighting For Tone Language Speakers in Early Childhood**  
 Sarah C. Creel, Reina Mizrahi et al.

**The Perceptual and Emotional Consequences of Articulation in Music**  
 Nathan R. Carr, Kirk N. Olsen et al.

**The Whole is Not Different From its Parts: Music Excerpts are Representative of Songs**  
 Sara J. Phillibotte, Stephen Spivack et al.

**About the Journal**

*Music Perception*: an interdisciplinary journal publishes theory driven, basic and applied science, empirical reports, theoretical papers, and reviews. The journal's scope concerns the perception and cognition of music in composing, improvising, playing, performing, recalling, recognizing, teaching, learning and responding to music through single or multiple modalities.

ISSN: 0730-7829 eISSN: 1533-8312

**Published Quarterly:** September, December, February, April, June

**Impact Factor:** 2.184

9

Browse by discipline ▾ Information for ▾

**Music & Science**

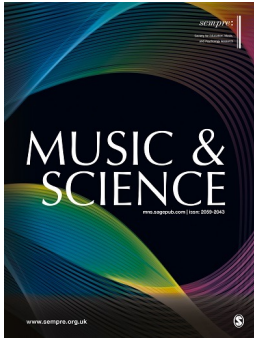
*sempre:*  
 Society for Education, Music,  
 and Psychology Research

[Journal indexing and metrics](#)

**Aims and scope**

*Music & Science* welcomes original research, commentaries and reviews, and sets no upper or lower limit on article length. As the journal is online it can host audio and video files. It has an open data policy; authors should be prepared to share and to make freely available data sets as well as relevant musical materials—audiovisual, sonic and notated. Authors are also encouraged to publish a summary of their research in audiovisual or podcast form alongside their submission to highlight for a non-specialist audience the significance of their research in the broad field of music and science as well as its potential impact.

Publication will be continuous and we aim to ensure a turn-around time for submissions that is as fast as is commensurate with a rigorous reviewing process.



10

11

12

frontiers

in Psychology

Auditory Cognitive Neuroscience

ABOUTJOURNALSRESEARCH TOPICSARTICLES

My submission details

To be completed

Journal \*

Frontiers in Psychology - Performance Science

Performance Science promotes discussion, debate and research into human performance. It welcomes original reports aimed at elucidating fundamental skills, mechanisms and outcomes underpinning performance activities and experiences.

Article type \*

Select

Special Topic Abstract

Original Research

Mini Review

Methods

Perspective

Review

Hypothesis and Theory

13

EMREmpirical Musicology Review

AboutCurrentArchivesAuthor GuidelinesSubmissions

Search

Current Issue

Vol. 16 No. 2 (2021)

EMREmpirical Musicology Review

Volume 16 No. 2 2021

Published: 2023-03-07

Editor's Note

Editor's Note

Daniel Shanahan, Daniel Müllensiefen

PDF

HTML

About the Journal

Empirical Musicology Review (EMR) aims to provide an international forum promoting the understanding of music in all of its facets. In particular, EMR aims to facilitate communication and debate between scholars engaged in systematic and observation-based music scholarship. Debate is promoted through publication of commentaries on research articles.

Scope

EMR publishes original research articles, commentaries, editorials, book reviews, interviews, letters, and data sets. Suitable topics include music history, performance, theory, education, and composition -- with an emphasis on systematic methods, such as hypothesis-testing, modeling, and controlled observation. Submissions pertaining to social, political, cultural and economic phenomena are welcome. Theoretical and speculative articles are welcome provided they contribute to the

14



## Journal of Research in Music Education



Impact Factor: **1.985** / 5-Year Impact Factor: **1.821**

### Aims and scope

*Journal of Research in Music Education* comprises reports of peer-reviewed original research related to music teaching and learning. The wide range of topics includes various aspects of music pedagogy, history, and philosophy, and addresses vocal, instrumental, and general music at all levels, from early childhood through adult.

15



**Latest Issue**  
Volume 59, Issue 4  
Winter 2022

Impact Factor  
**2.645**

#### Co-Editor

A. Blythe LaGasse

**Interim Co-Editor**  
Kimberly Sena Moore

**Associate Editors**  
Felicity Baker  
Stine Lindahl Jacobsen  
Helen Shoemark  
[Editorial Board](#)

### Publish with us

The *Journal of Music Therapy* is the perfect home for research articles that advance the science and practice of music therapy. Can you contribute your latest work?

[Read our Author Guidelines](#)



The *British Journal of Music Therapy* (BJMT) is a peer-reviewed journal for music therapists and other professionals interested in all aspects of music therapy. The BJMT publishes original articles or essays that have direct relevance to the field of music therapy. A variety of perspectives and approaches is encouraged...  
[View full journal description](#)

This journal is a member of the [Committee on Publication Ethics \(COPE\)](#).

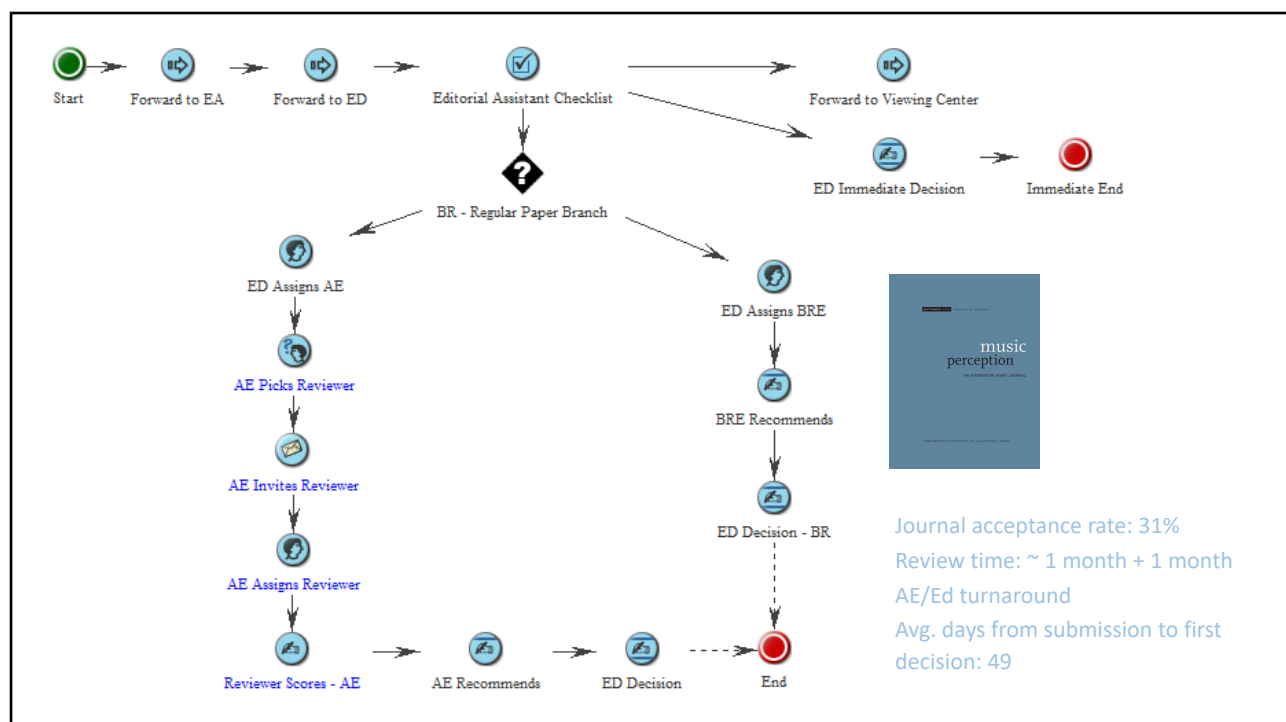
16



### 3. Steps in the journal article publication process

- Pre-submission review – ask peers and an experienced colleague to read and provide constructive feedback
- Draft a cover letter
  - a) some journals ask for bullet point ‘key messages’, innovations
  - b) Keywords – do they align with Aims/Scope of the journal being targeted?
  - c) Suggest 2-3 reviewers
  - d) Ensure co-authors have read, agree to submission, ideas for reviewers

17



18

## 4. Common (fixable) challenges that Editors see

- a) Mismatch with journal Aims and Scope
- b) Looking for feedback
- c) Literature review / Introduction light on – often paired with a Discussion that re-states rather than explains or interprets results
- d) Small sample size, low statistical power – need to be able to draw conclusion from results
- e) Computational model with little connection to psychology

19

## Top Tips

- Research the journal – aims and scope; recent issues
- Write for a particular audience
- Read the manuscript aloud
- Try to communicate one message (rather than 2, 3, or 4)
- Pre-submission review
- Enjoy the creativity and practice of writing and communicating!
- Add your own here.....

20

WESTERN SYDNEY  
UNIVERSITY



The MARCS Institute for Brain,  
Behaviour and Development

## Getting Published in Music Psychology - Appendices

Kate Stevens

Editor-in-Chief *Music Perception*  
MARCS.Director@westernsydney.edu.au

UNIVERSITY  
of CALIFORNIA  
PRESS

21

## Open Science

*Context:* replication; null results; HARKing; selectivity

Open Science Framework includes:

1. Pre-registration
2. Registered Reports
3. Open data; code
4. Open access incl self archiving



<https://osf.io/>

22

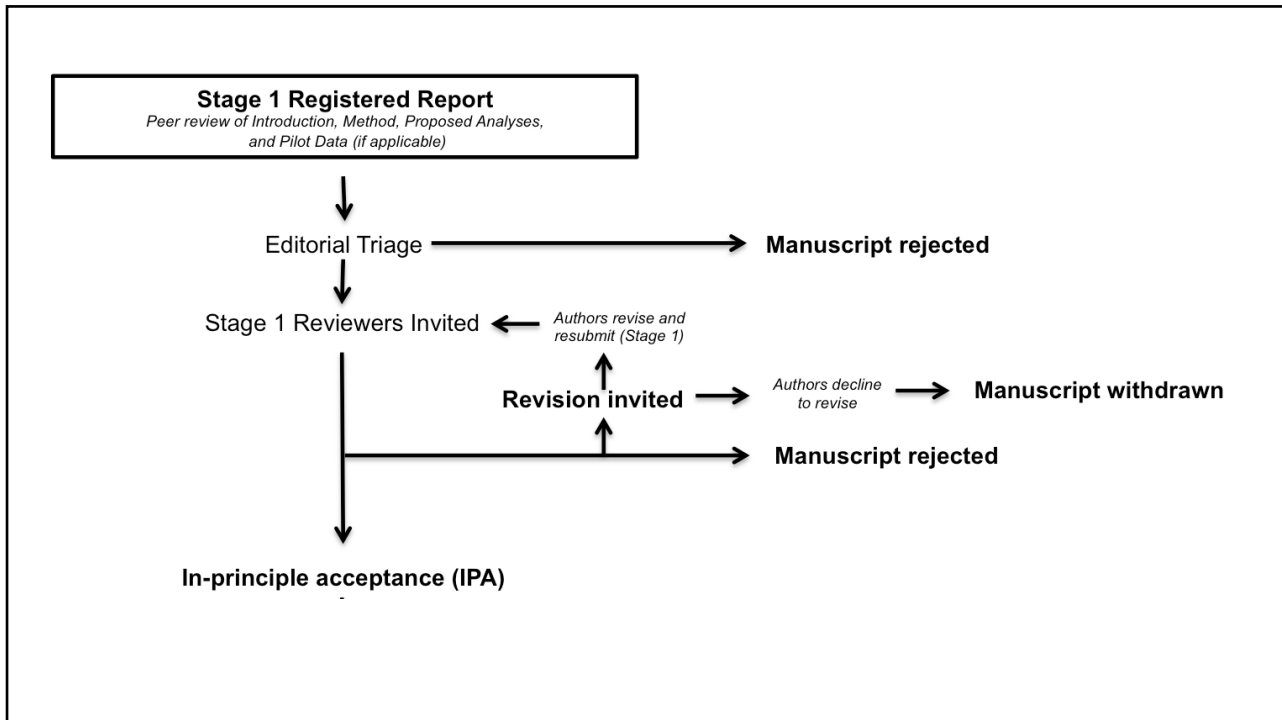
## Registered Reports

1. Pre-study peer review ensures that protocols are well specified so as to be reproducible and by providing an opportunity for reviewers to advise on design corrections or improvements before serious errors may happen
2. In principle acceptance before results are known helps to prevent publication bias
3. Selective reporting is minimized because the protocol is embedded unchanged in the final publication and re-reviewed by the panel of reviewers

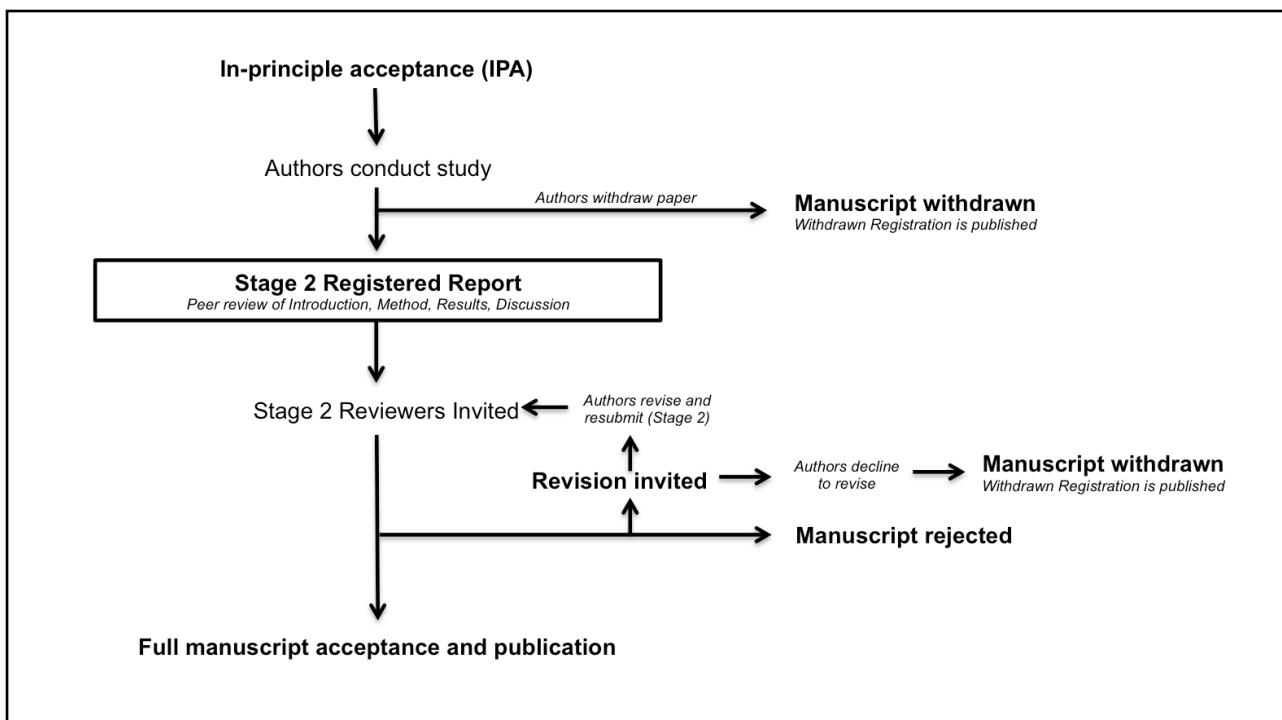
23



24



25



26

## Impact Factor

2017 IF = 0.974

2018 IF = 1.152

2021 IF = 2.184

2021 JOURNAL IMPACT FACTOR

**2.184**

[View calculation](#)

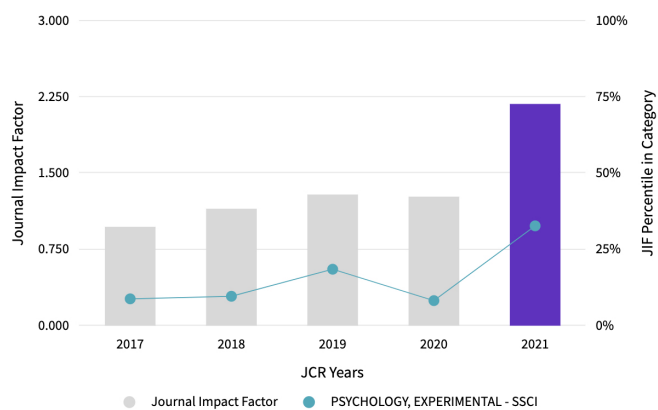
JOURNAL IMPACT FACTOR WITHOUT SELF CITATIONS

2.041

[View calculation](#)

Journal Impact Factor Trend 2021

[Export](#)



Clarivate: Journal Citation Reports

27

Journal Impact Factor is calculated using the following metrics

Citations in 2021 to items published in 2019 (55) - 2020  
(52)

107

=

Number of citable items in 2019 (25) + 2020 (24)

49

= 2.184

28

Citing titles in all years

MUSIC PERCEPTION

	SOURCE NAME	COUNT
	All Others	197
1	Frontiers in Psychology	168
2	Psychology of Music	143
3	MUSIC PERCEPTION	125
4	MUSICAE SCIENTIAE	101
5	PLoS One	76
6	Scientific Reports	59
7	Psychomusicology	49
8	JOURNAL OF NEW MUSIC RESEARCH	47
9	Music Theory Online	45
10	Psychology of Aesthetics Creativity and the Arts	35
11	PHILOSOPHICAL TRANSACTIONS OF THE ROYAL SOCIETY B-BIOLOGICAL SCIENCES	34
12	MUSIC THEORY SPECTRUM	32
13	BEHAVIORAL AND BRAIN SCIENCES	30
14	JOURNAL OF EXPERIMENTAL PSYCHOLOGY-GENERAL	28
15	Attention Perception & Psychophysics	27
16	Frontiers in Neuroscience	26
17	ACTA PSYCHOLOGICA	22
18	COGNITION	22
19	PSYCHOLOGICAL RESEARCH-PSYCHOLOGISCHE FORSCHUNG	22
20	ANNALS OF THE NEW YORK ACADEMY OF SCIENCES	18

Contributions by country/region

Countries or Regions that have contributed the most papers to the journal in the most recent three-year period.

RANK	COUNTRY/REGION	COUNT	
1	USA	29	<div></div>
2	Canada	17	<div></div>
-	England	17	<div></div>
4	Australia	14	<div></div>
5	GERMANY (FED REP GER)	10	<div></div>
6	Finland	6	<div></div>
7	France	5	<div></div>
8	Norway	4	<div></div>



Scopus

i Improved CiteScore methodology

CiteScore 2021 counts the citations received in 2018-2021 to articles, reviews, conference papers, book chapters and data papers published in 2018-2021, and divides this by the number of publications published in 2018-2021.  
[Learn more >](#)

CiteScore 2021

$$2.7 = \frac{305 \text{ Citations 2018 - 2021}}{115 \text{ Documents 2018 - 2021}}$$

Calculated on 05 May, 2022

CiteScoreTracker 2022

$$2.3 = \frac{216 \text{ Citations to date}}{92 \text{ Documents to date}}$$

Last updated on 05 July, 2022 • Updated monthly